



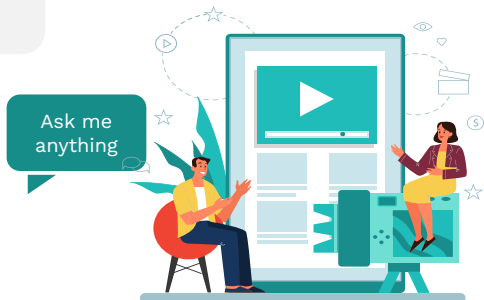
Virtual Journal club



*Digital Health Measurement
Collaborative Community*

Moving from “Should Do” to “How To”
A deep dive into the DATAcc Toolkits for
Inclusivity with the creators

July 12, 2022 11am ET



Jamileh Jemison, MD, MS
Digital Clinical Director
MindMed



Jeanne Chung
Program Lead
DiMe



Kristin Size
Head of Study Devices
Verily



Mitchell Tang
Doctoral Candidate
Harvard Business School



Nicole Braccio, PharmD, RPh
Policy Analyst & Pharmacist
**National Patient Advocate
Foundation**



Yashoda Sharma, PhD
Program Director
DiMe
Moderator

But first, housekeeping

- Please note today's session is being recorded
- To ask a question for discussion during Q&A, please:
 - Either 'raise your hand' in the participant window and moderator will unmute you to ask your question live, or
 - Type your question into the chat box
- Slides and recording will be available after today's session

New opportunities with digital medicine

- Digital health technology and measurement, has provided a new opportunity to improve health outcomes, health economics, and health equity
- Digital health measurement is at a crossroads



How do we ensure that we use digital measures to improve individuals' care, not violate their privacy?



How do we ensure that we can take a data-driven approach to public health without facilitating harmful surveillance?



How do we use digital health measures to improve access to care and health equity, not exacerbate these challenges along the digital divide?

Collaborative Communities

Collaborative communities - pre-competitive collaborations of diverse stakeholders in the medical device ecosystem that are dedicated to improving outcomes and solving challenges in a specific health area.



FDA's Center for Devices and Radiological Health (CDRH) strategic priority

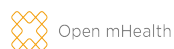


The **Digital Health Measurement Collaborative Community (DATAcc)**, hosted by DiMe, convenes the broad and inclusive range of stakeholders necessary to modernize the way we measure and define health and disease using digital approaches and technologies.



Working together to achieve the promise of digital health measurement to improve lives, for everyone.

Community Partners



Members also include FeetMe Devices, HIMSS, HHS-HC3, IEEE SA, Johns Hopkins Medicine Armstrong Institute for Patient Safety and Quality, National Cancer Institute, National Digital Inclusion Alliance, OptumLabs, US Dept. of Veterans Affairs, and Verily.

Prioritizing inclusion

Driving Inclusion in Digital Health Measurement Products

Development Lifecycle

Project goal:

to ensure that **diverse voices are included** in all stages of the product **development** lifecycle

Deployment Process

Project goal:

to **operationalize inclusivity** in the **deployment** of digital health measures across contexts of use

Vectors of Inclusivity

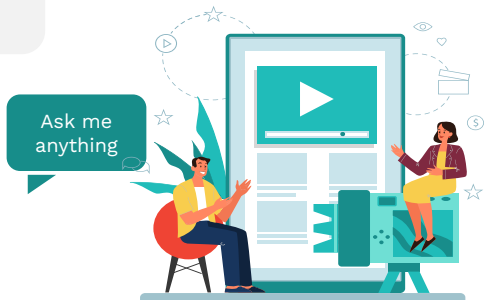
- Race and Ethnicity
- Disabilities
- Socioeconomic Status
- Digital Access and Literacy
- Educational Attainment
- Gender
- Sexual Identity
- Age
- Geography
- Health Status



Virtual Journal club



*Digital Health Measurement
Collaborative Community*



Moving from “Should Do” to “How To”
A deep dive into the DATAcc Toolkits for
Inclusivity with the creators

July 12, 2022 11am ET



Jamileh Jemison, MD, MS
Digital Clinical Director
MindMed



Jeanne Chung
Program Lead
DiMe



Kristin Size
Head of Study Devices
Verily



Mitchell Tang
Doctoral Candidate
Harvard Business School



Nicole Braccio, PharmD, RPh
Policy Analyst & Pharmacist
**National Patient Advocate
Foundation**



Yashoda Sharma, PhD
Program Director
DiMe
Moderator

Toolkits for Inclusivity

- Toolkit for Inclusive Development (<https://dataacc.dimesociety.org/development/>)
 - Tool: Market Opportunity Calculator
 - Tool: The Digital Health Measurement Product Development Process
 - Tool: The Framework for Inclusive Development
- Toolkit for Inclusive Deployment (<https://dataacc.dimesociety.org/deployment/>)
 - Patients, Participants, and Community
 - Tool: Prepping End Users for Inclusive Deployment of Digital Health Measurement Products
 - Implementing Inclusive Deployment
 - Tool: Workbook for Inclusive Deployment of Digital Health Measurement Products

Call to action



Submit a Resource

DiMe and DATAcc resources are strengthened by you. Share resources you think demonstrate evidence of inclusivity.



Submit a Case Study

These resources are most valuable when we can show how they are improving the field. Share how you are using these resources in your work.



Provide Feedback

These resources should evolve to to meet your changing needs as the field advances. Share feedback on your experience with these resources.



THANK YOU

Yashoda Sharma: yashoda@dimesociety.org

Jeanne Chung: jeanne@dimesociety.org



@_DiMeSociety



linkedin.com/company/dime-society