



Increasing software innovation in digital health products through unified cross architecture programming

February 1, 2023 11:30AM-12:30PM ET



Beenish Zia

Chief Architect for Medical
Imaging, **Intel Corporation**



David Blackman

Executive Director Digital
Trials Strategy, **Oracle**



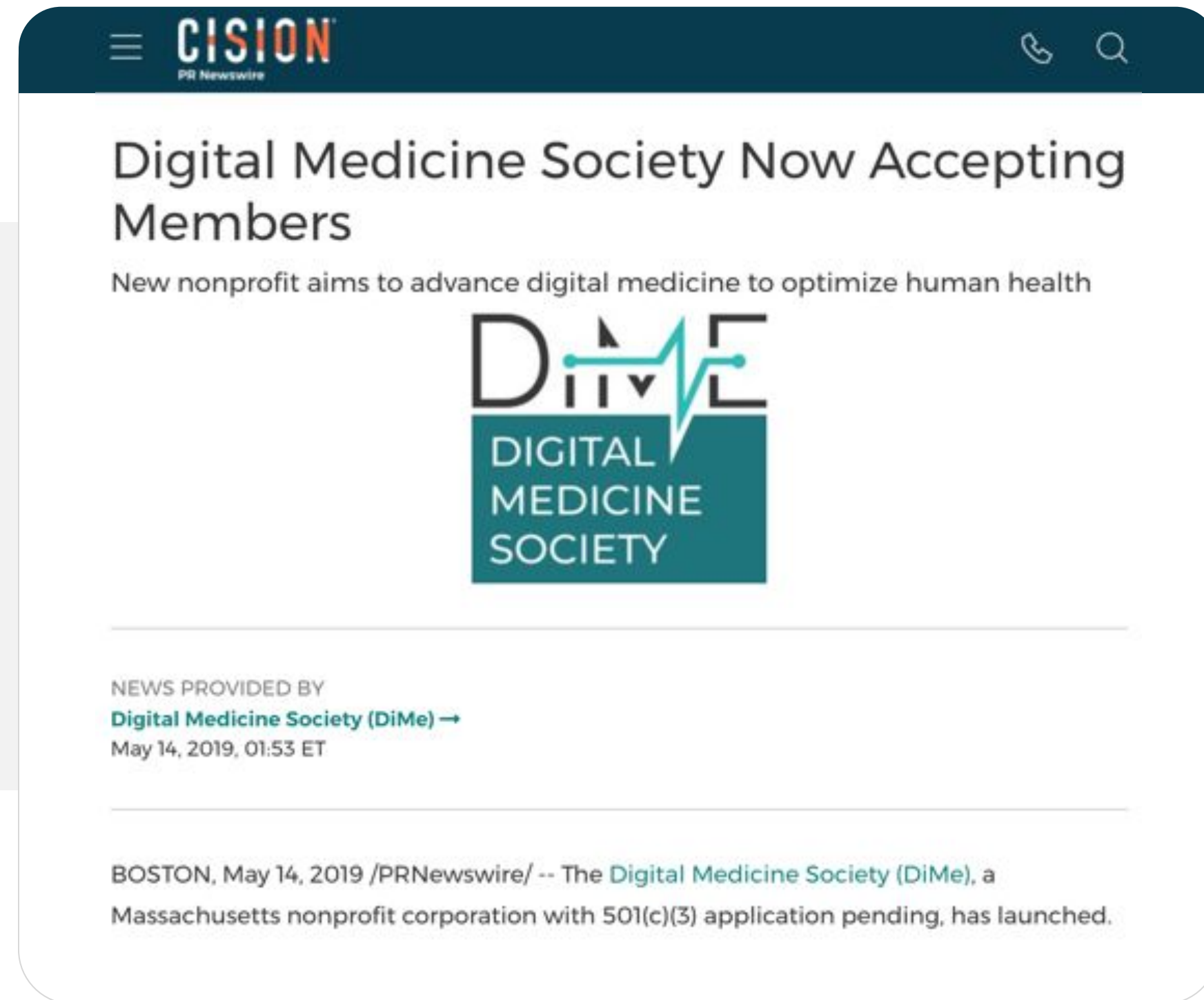
Moderator: Sarah Valentine

Partnerships Manager,
Digital Medicine Society

Our purpose

DiMe is a global non-profit dedicated to advancing the **ethical, effective, equitable**, and **safe** use of digital medicine to redefine healthcare and improve lives.

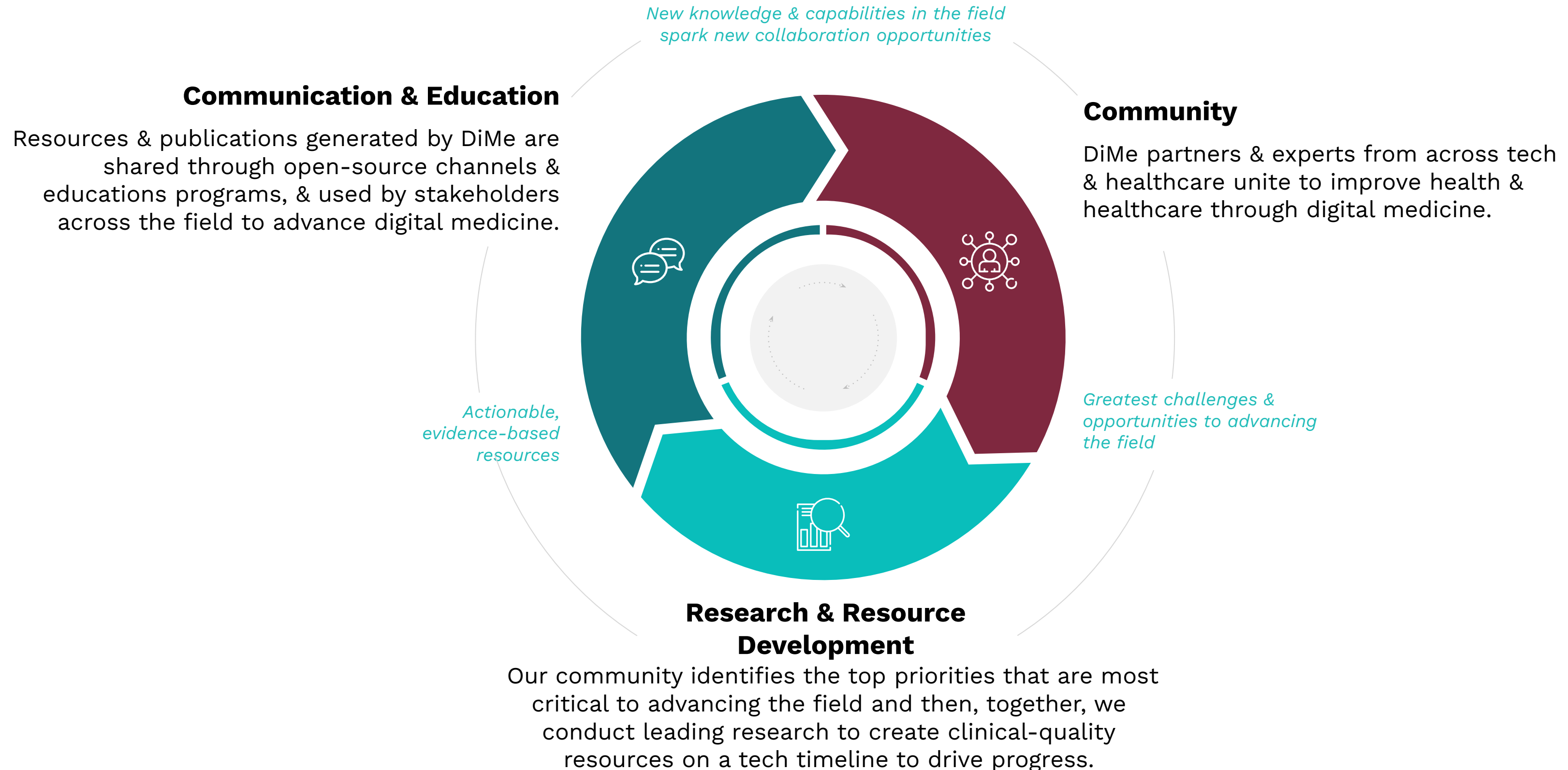
We launched in May 2019...



... and sit at the intersection of two communities



We deliver clinical quality work on a tech timeline



But first, housekeeping

- Please note: **today's session is being recorded**
 - Slides and recording will be available on DiMe's webinar page after the session
- To ask a question for discussion during live Q&A, please either:
 - **'Raise your hand'** in the Reactions and the moderator will unmute you to ask your question live, or
 - **Type your question** into the chat box



Increasing software innovation in digital health products through unified cross architecture programming

February 1, 2023 11:30AM-12:30PM ET



Beenish Zia

Chief Architect for Medical
Imaging, **Intel Corporation**



David Blackman

Executive Director Digital
Trials Strategy, **Oracle**



Moderator: Sarah Valentine

Partnerships Manager,
Digital Medicine Society

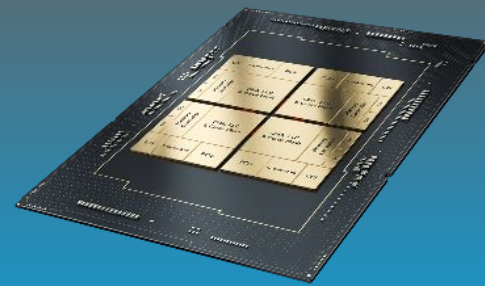
Increasing Software Innovation In Digital Health Products Through Unified Cross Architecture Programming



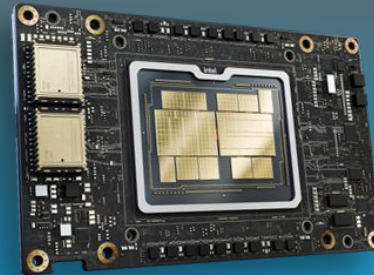
Modern Applications Demand Increased Processing

Diverse accelerators needed to meet today's performance requirements:
48% of developers target heterogeneous systems
that use more than one kind of processor or core¹

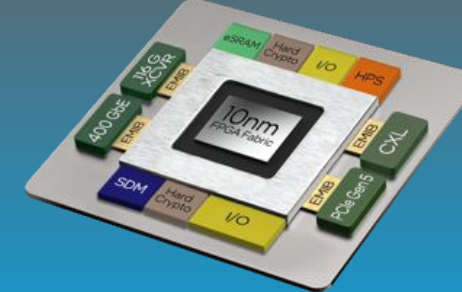
CPU



GPU



FPGA



Other Accelerators



Developer Challenges: Multiple Architectures, Vendors, and Programming Models



Open, Standards-based, Multiarchitecture Programming

1. Evans Data Global Development Survey Report 22.1, June 2022

Unified Cross Architecture Programming with oneAPI: An Industry Initiative

- Freedom to Make Your Best Choice
- Realize all the Hardware Value
- Develop & Deploy Software with Peace of Mind



The productive, smart path to freedom for accelerated computing from the economic and technical burdens of proprietary programming models



Visit oneapi.com for more details

Medical Imaging Example

Medical Imaging Modalities

- CT, MR, X-Ray, PET, Mammogram

Compute Intensive Image Processing

- Image Reconstruction, Image Rendering etc.

AI augmentation (application/diagnosis)

Workload Consolidation

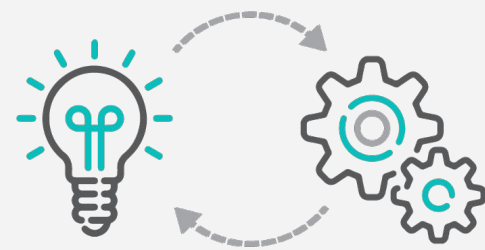
- Consolidate platform running multiple applications over VMs on a heterogeneous system

Need for

- common programming language
- remove hardware vendor lock-in
- Faster time to market

The answer is Unified Cross Architecture Programming (oneAPI)

Resource in Action



Be a Part of the  Community
Resources in Action Hub

Tell us your DiMe “Resource in Action”
story and we’ll feature it in our
Resource in Action Hub!

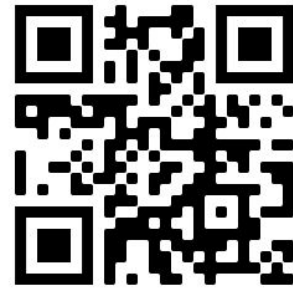


[Submit to DiMe's Resource in
Action Hub!](#)

Resources For You To Get Started

oneAPI :

Industry specification via oneapi.io



Github for Open source: github.com/oneapi-src



Code Migration:

Whitepaper on [oneAPI for Healthcare: C++ to DPC++ Migration Example](#)



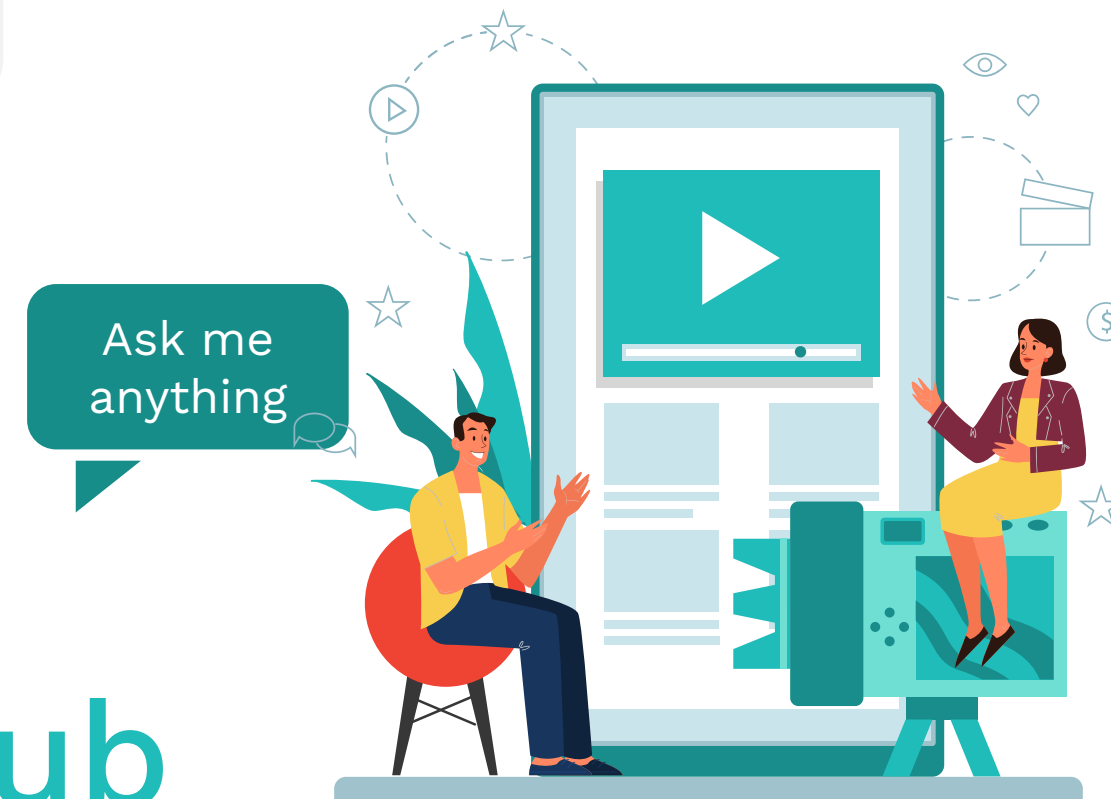
CUDA to DPC++ : [Intel® DPC++ Compatibility Tool](#)



Connect on LI:

[Beenish Zia](#), [David Blackman](#), [Sarah Valentine](#)

Virtual Journal club



Applicability of Artificial Intelligence in Healthcare in Resource-Poor Settings

Thursday, February 9th, 2023 12pm ET



Ashveena Gajeelee
Founder and CEO
Veritas Consortium, LLC



Mansa Shroff
Director of Business Development,
Chief of Staff
WKD.SMRT

What are YOU doing to increase diversity in clinical trials?

Wednesday, February 15 at 11:00 AM (ET)

[Register to Join](#)



[Kimberly Barnholt](#)

Sr. Director & Evidence
Generation Leader,
Genentech



[Shelli Pavone](#)

CEO & Co-Founder
Inlightened



[Dyan Bryson](#)

Assoc Director Clinical Ops
ICON plc



[Reginald Swift](#)

CEO, Co-Founder, CSO
Rubix LS



[Ashish Chaturvedi](#)

Founder & CEO
Althea.ai



[Pamela Tenaerts](#)

Chief Scientific Officer
Medable, Inc



[Burgess Harrison](#)

Executive Director,
National Minority Health Network



[R'Kes Starling](#)

Chief Executive Officer
Reveles Clinical Services



[Ricki Fairley](#) (Moderator)

CEO
Touch, The Black Breast Cancer Alliance

Notices and Disclaimers

Performance varies by use, configuration and other factors. Learn more at [www.Intel.com/PerformanceIndex](https://www.intel.com/PerformanceIndex).

No product or component can be absolutely secure.

Your costs and results may vary.

Intel technologies may require enabled hardware, software or service activation.

Some results may have been estimated or simulated.

Intel does not control or audit third-party data. You should consult other sources to evaluate accuracy.

All product plans and roadmaps are subject to change without notice.

Statements in this document that refer to future plans or expectations are forward-looking statements. These statements are based on current expectations and involve many risks and uncertainties that could cause actual results to differ materially from those expressed or implied in such statements. For more information on the factors that could cause actual results to differ materially, see our most recent earnings release and SEC filings at www.intc.com.

© Intel Corporation. Intel, the Intel logo, and other Intel marks are trademarks of Intel Corporation or its subsidiaries. Other names and brands may be claimed as the property of others.



THANK YOU

Sarah Valentine | sarah.valentine@dimesociety.org

www.dimesociety.org



@_DiMeSociety



[linkedin.com/company/dime-society](https://www.linkedin.com/company/dime-society)